

The best there is

HZ750, HZD750

The 750 models, like the 570 and 900's, are available in a choice of two specifications. The HZ750 is a single motored model and the HZD750 is a twin motored unit.

The main difference between the 750 and 900 models is the all steel construction from top to bottom; power head, filter module, container and heavy duty chassis. By design the complete assembly can be removed from its chassis, by a single toggle action, as may be required, in some instances, for decontamination purposes.

HEPA H14
filtration
99.997%



Heavy duty steel chassis

Heavy duty all steel chassis release system.

Accessory kit

IMPORTANT INFORMATION

Correctly selected and maintained the HZ series will form a valuable part of any system designed to control hazardous and health endangering dusts in the environment. It is important, however, to ensure the correct consideration is given to the appropriate clothing and protection required by the operator in carrying out any specialist operation.

A choice of MicroFlo or HepaFlo fine-dust bags

HZ kits see specification table



HZ Specifications

| Model | Motor | Power | Suction | Airflow | Kit | Capacity | Filtration | Range | Weight | Size |
|--------|---------|-----------------|---------|---------|------|----------|------------|--------|--------|---------------|
| HZ200 | 1200W | 230V AC 50/60Hz | 2500mm | 42L/sec | BB17 | 9L | H* | 26.8 m | 10.1kg | 355x355x520mm |
| HZ250 | | | | | BB18 | 8L | | | 11.5kg | 340x340x455mm |
| HZ370 | | | | | BB19 | 10L | | | 10.4kg | 355x355x570mm |
| HZ570 | | | | | BB20 | 23L | | | 17.1kg | 470x420x746mm |
| HZD570 | 2400W | 230V AC 50/60Hz | 2500mm | 84L/sec | BB20 | 35L | H* | 26.8 m | 19.3kg | 530x500x935mm |
| HZ750 | 42L/sec | | | 19.8kg | | | | | | |
| HZD750 | 84L/sec | | | 22kg | | | | | | |
| HZ900 | 42L/sec | | | 25kg | | | | | | |
| HZD900 | 2400W | 230V AC 50/60Hz | 2500mm | 84L/sec | BB20 | 40L | H* | 26.8 m | 27.2kg | 810x480x890mm |
| | 42L/sec | | | | | | | | | |

* H Class to IEC 60 335-2-69



www.numatic.co.uk

www.numatic.de

www.numatic.ch

www.numatic.fr

www.numatic.nl

www.numatic.co.za

Numatic International Limited, Chard, Somerset, TA20 2GB Tel: 01460 68600 Fax: 01460 68458
Numatic International Limited 2013. Specification subject to change without prior notice. PN 244150 07/13

HZ Range

Better Hazardous DustCare...
by design



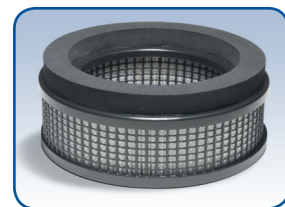
HZ range...

The HZ series of machines are designed to collect H class dusts. All models operate to a 99.997% filter efficiency, H14 HEPA and tested to IEC 60 335-2-69.

HZ200, HZ370, HZ250



The three small machines within the HZ range only vary in the container size and construction. The universal HZ power head is of all steel construction and incorporates a full TwinFlo motor, service centre handle, bag full indicator and NuCable plugged cable system as standard. The HEPA H14 filter unit is mounted in an all steel secure module with a separate primary pre-filter in the container itself and all machines are designed to operate together with our high efficiency HepaFlo dust bags to ensure excellent performance and easy, clean and safe emptying.



H class Micro filter

High hazard dusts under complete control

HZ570, HZD570

The midrange HZ570 series provides a choice of Simplex HZ570 one motor or Duplex HZD570 two motored models.

The Duplex models have a 100% increase in AirFlo over the Simplex units and would be the preferred selection where larger volumes of fine material need to be collected.

The Power head is of all steel construction fitted with one or two TwinFlo motors, service centre handle with bag full indicator, NuCable plugged mains cable system and power outlet socket as standard.

The H class filter module is securely mounted within our all steel housing and provides an efficiency standard of 99.997% in use.

The container is of a one piece Structofoam construction.

Our high efficiency system ensures superb operational performance using either HepaFlo or MicroFlo dust bags.



Transit safety cap top and bottom



NuCable allows easy cable replacement

HZ900, HZD900



Larger capacity and mobility whilst incorporating all the advanced features of the 570 models

Available in one motored HZ900 or two motored HZD900 models, and designed to provide increased capacity and mobility whilst incorporating all the many advanced features of the 570 models.

An important consideration when selecting a machine for the collection of hazardous dusts is that, quite often, the dust itself is by definition "fine dust" and, in this respect, the MicroFlo bag option provides operational performance to an exceptionally high standard combined with the ideal system for clean and safe emptying.



Standard power outlet socket
Simplex 2000W power outlet
Duplex 1000W power outlet