



## 1. NOTICE

When installing the pump read the label and verify the following:

- Tubing material is compatible with the liquid;
- The power supply available is identical to the indicated one;
- Pressure at the injection point is lower or equal to the pump nominal pressure;
- Suction tubing is inserted in the liquid container, fitted to the suction connection of the pump (represented on the lid with  $\Delta$ ) and tightened with the proper nut
- Delivery tubing is fitted to the delivery connection of the pump (represented on the lid with  $\nabla$ ), tightened with the proper nut and fitted to the tank injection connection;
- The protection lid of the liquid end is properly fitted in its seat;
- The pump is connected to an electric system which has an all-poles disconnection device with open state distance between contacts of at least 3 mm (0.12").



**BEFORE CARRYING OUT ANY OPERATION ON THE PUMP, DISCONNECT THE POWER SUPPLY!!**

**IF ANY OF THE INSTRUCTIONS HERE CONTAINED IS NOT RESPECTED THERE CAN BE DAMAGE TO PERSONS AND/OR INCORRECT WORKING OR DAMAGE TO THE APPARATUS**

### 1.1 TECHNICAL FEATURES

<b>Power Supply</b>	100÷240Vac @50/60 HZ
<b>Maximum Power Consumption</b>	5W
<b>Fuse</b>	1A L 250V, 5X20 mm
<b>Max suction height</b>	1.5 m (59")
<b>Weight</b>	0.6 kg (1.32 lb)
<b>Dimensions (W x H x D mm)</b>	97.4 x 133.5 x 117.0 mm (3.83" x 5.25" x 4.60")

### 1.2 ENVIRONMENTAL SPECIFICATIONS

<b>Altitude</b>	Maximum operating altitude 2000 meters (6500 feet)
<b>Internal Ambient Temperature Range</b>	5-50°C (41-122°F) For indoor use only
<b>Humidity</b>	Maximum relative humidity 80% at up to 30°C (86°F) decreasing linearly to 50% relative humidity at 40°C (104°F)
<b>Pollution Degree</b>	2
<b>Overvoltage Category</b>	II

## 1. INSTALLATION INSTRUCTIONS



**CAUTION!** Crushing risk, don't open the frontal cover during the working, for tube replacement refer to the paragraph 9.



**CAUTION!** Position the equipment so that the mains plug can be easily reached by the operator in order to disconnect the equipment from the supply source.

### 2.1 INSTALLATION WITH THE PROVIDED BRACKET

It possible to fix the system in the following walls: hollow brick, solid brick, concrete with a minimum thickness of 100 mm.

- Fix the metal bracket with the provided screw
- In case of tiled or low friction walls use the supplied adhesive tape as follow:
  - peel off one of the two protective foils from the tape, stick the tape to the bracket;
  - peel off the second protective foil and proceed to fix the bracket with the provided screw;
- fix the pump on the bracket making tongues on the back of the pump slide in the bracket.

### 2.2 SUCTION FILTER INSTALLATION

- Insert the end of the tubing in the weight so that it exits from the flared part; insert the filter container in the same end of the tubing;
- Tighten the tubing screwing the weight until it sits on the filter container;
- It is strongly recommended to use the suction filter in all situations, to assure that it reaches the bottom of the tank and to clean it periodically to avoid dry residual of product or accumulation of dirt.

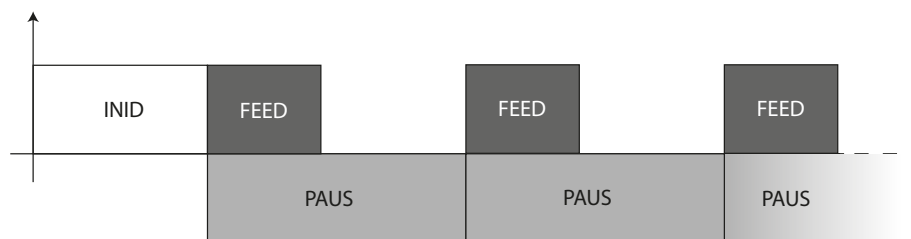
## 2. OPERATION MODE

The pump runs a cyclic programmed dose in the time, after the initial delay.

The pump cyclically doses in XXX seconds, every YY days, hours or minutes, after the initial delay of ZZ days, hours or minutes.

The pause (**PAUS**) is the cycle time between the start of one dose (**FEED**) and the subsequent one. This means that you can change the dosing time without affecting the cycle time.

The initial delay (**INID**) affects only the first dose, it is useful to define a start time of the dose at the time of programming.



### 3. PROGRAMMING THE PUMP

To enter programming, hold down the left button for at least 5 seconds.

To scroll through the menu options, press the right button, and to make the changes, press the left button.

As a general programming rule, all flashing parameters can be edited with the right button and the changes can be confirmed with the left button.

The menu items are:

**FEEd** - setting the dosing time (default 60 seconds)

**F060** – settable from 0 to 999 seconds.

**PAUS** – setting the pump cycle time (default 1 day)

**Pd0 l** – settable in minutes (**Pn0 l**) from 1 to 59 minutes, or in hours (**PH0 l**) from 1 to 23, or in days (**Pd0 l**) from 1 to 30 days.

**ln .d** – setting the initial delay (default 0 minutes)

**ln00** – settable in minutes (**ln00**) from 0 to 59 minutes, or in hours (**lH0 l**) from 1 to 23, or in days (**ld0 l**) from 1 to 30 days.

**PASS** – setting the password (default 000, no password)

**P000** – settable from 0 to 999.

If a password is set, it will be required each time the menu is opened and before activating start mode.

**ESC** – exiting the menu and confirming the settings.

### 4. STARTUP

To start the pump, press the right button for 3 seconds, the pump will run for 60 seconds.

To lock the start within 60 seconds, press one of the two buttons.

### 5. STAND-BY OPERATION (Switch position 0)

In stand-by operation the display shows **5bY**, when the pump is waiting to be programmed (left button for at least 5 seconds) or started (right button for at least 3 seconds).

### 6. NORMAL RUNNING (Switch position 1)

In normal operation the display shows, example:

**l h05** – shows the time remaining before the first dose, as specified in **ln .d** (in this case, there are 5 hours left).

**F060** -> **F059** -> **F058** ... **F000** – shows the dose countdown, as specified in **FEEd**.

**Pn0 l** – shows the time remaining before the next dose, as specified in **PAUS**. (in this case, there is 1 minute left).

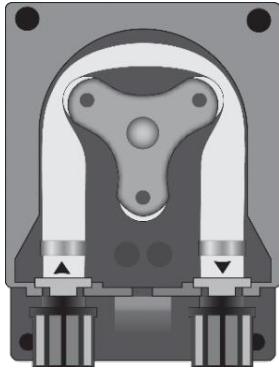
### 7. PUMP RESET

To reset the pump at any time, press and hold the left button for at least 15 seconds: the display will show

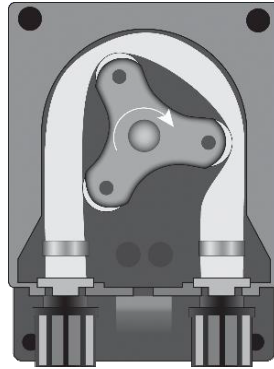
**rESE** lamp, press the left button the display will show **no**, select **YES** with the right button and confirm with the left button.

## 8. TUBING SUBSTITUTION (Qualified service personnel only)

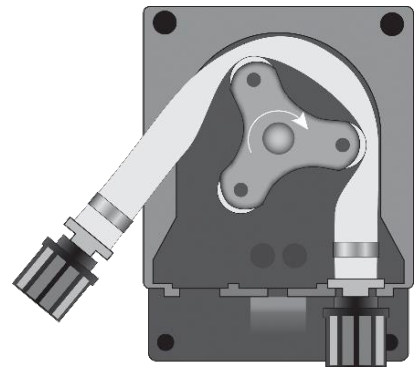
- Disconnect the pump from the power supply
- Take off the transparent lid on the hydraulic group.



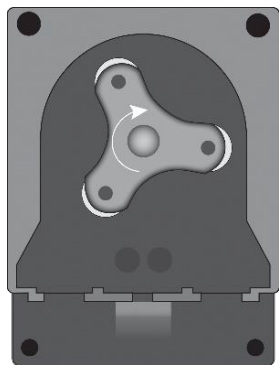
Open the pump's lid and release the hose by pulling the left connector upward.



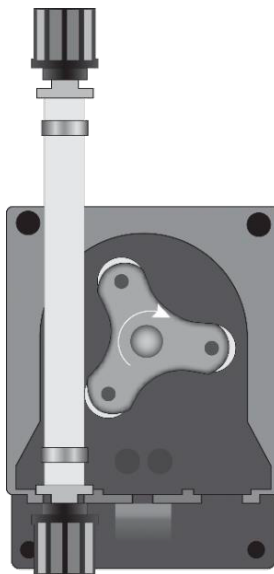
Position the roller at 7h15, turning it in the direction of the circular arrow.



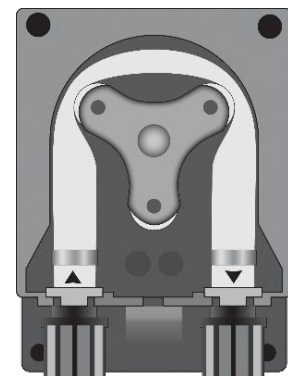
Completely release the left connector, holding it taut towards the outside, and turn the roller in the direction of the circular arrow so that the hose is freed up to the right connector.



Position the roller at 7h05, turning it in the direction of the circular arrow.



Insert the left connector into the relative housing and pass the hose under the roller's guide. Turn the roller in the direction of the circular arrow, simultaneously accompanying the hose into the pump's head, until the right connector is reached.



Close the pump's lid and press its surface hard so that it is properly locked into place.



Use caution to avoid personal injury or damage to the equipment!

## **9. MAINTENANCE & ACCESSORIES**

### **10.1 MAINTENANCE**

To remove dust, dirt or stains from the outer surface of the instrument can be used a damp cloth and if necessary, a mild detergent non-aggressive.